

Development of Board for Testing IR Combustible Gas Sensors and Their Performance Test

Seungho Han¹, Gyoutae Park², Byungduk Kim³, Youngdo Jo⁴, Yeonjae Lee⁵, Hiesik Kim⁶

^{1,6}Dept. of Electrical and Computer Engineering, University of Seoul

^{2,3,4,5}Institute of Gas R&D, Korea Gas Safety Corporation

(¹shhan87@kgs.or.kr, ²gtparkgs@kgs.or.kr, ³kimbd@kgs.or.kr, ⁴ydjo@kgs.or.kr, ⁵lyj@kgs.or.kr, ⁶drhskim@uos.ac.kr)

Abstract - In this paper, we developed a board to test IR combustible gas sensors and achieved their performance test. For the first of all, we verified characteristics of sensors through testing from input of gases to output of voltages. Second, we induced a suitable calibration line to represent characteristics of sensors using linearization regression equation. Third, we improved measuring algorithm using recursion equation and Lagrange interpolation polynomial. Then, we proposed the best calibration line using by our algorithm to inspect gas leaks of safety management fields. To check performances of several sensors, we achieved the measurement tests with six standard gases made by Korea Gas Safety Corporation. We demonstrated instruments applied by our algorithm better in detecting accuracy other than detectors through experimental results.

Keywords - Gas sensor, leak, detector, accuracy, interpolation

I. INTRODUCTION

In May 2015, a gas explosion accident happened while removing residual gas in processing internal pressure test in the Chung-ju city at the LP gas professional inspection company, Korea [1]. In this accident one person killed, two people injured and over than 10 million won damaged in property. Usually gaseous accidents happened to critical damages against human and property resources [2]. In Korea, an inspector, completing courses on gas leak detection, has been to check and monitor gaseous facilities for preventing accidents. Nevertheless, a gas inspector wears protection equipment against toxic gases such as ammonia, carbon monoxide, they were poisoned. In these accidents, an inspector suffered sudden death. It found that combustible gases such as methane, hydrogen, can be exploded by very small sparks. So it is very important to usually effort the safety management when treating gases or in their facilities and pipelines.

In this paper, we developed an emerging gas leak detector using an IR gas sensor, which can be safely measured in explosion danger areas. We tested the performance of gas sensors and combustible gas detectors through comparing international good model and improved its performance such as accuracy, response time, range, and design.

II. METHOD

A. Combustible of Infrared Gas Sensor

Our criterion for selecting a compatible sensor is based on Table I.

TABLE I. CRITERIA OF A SENSOR MODULE

Item	Content
Accuracy	$\leq \pm 3\%$ Full Scale %Vol.
MTBF	≥ 5 year
Explosion proof	0

As described in Table I, we found two type sensors to detect combustible gases. Fig. 1 shows their appearances of sensors. Before manufacturing gas leak detection instruments, we have to test and compare a variety of sensors based on specifications provided by manufacturers. Table II shows some parts of sensor's specifications [3], [4].

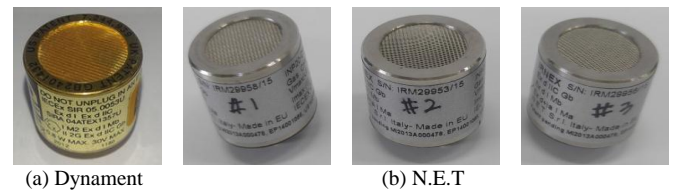


Figure 1. Gas sensor modules

Two type sensors have similar specifications. But, the N.E.T.'s sensor has more accurate than Dynamment sensor's manufacturer at from 0% to 50% FS in methane. But over than 50% FS in methane, the Dynamment's sensor has more accurate than the N.E.T.'s sensors. Moreover, the Dynamment's sensor is lighter than N.E.T.'s sensor, otherwise N.E.T.'s sensor is cheaper than Dynamment's sensor. The results of these sensors are shown in Fig.3 and Fig. 4.

B. Performance Test of Infrared Sensors

To verify performances of sensors, we measured and analyzed sensor's output voltages according to variations of methane concentration. In general, better sensor, less error between ideal and measured values [5]. To verify performance of methane gaseous sensors, we measured the

output voltages from sensors and compared their specifications and real measuring voltages. First of all, we installed the experiment instrumentations for performance of sensors as shown in Fig. 2. Then, we developed testing board of sensors from input of gases to output of voltages for the sensors made by N.E.T. Company. Fig. 2 shows a designed sensor testing board and scene of performance testing using standard gases with six kinds of concentrations.

TABLE II. SPECIFICATION OF SENSOR MODULES

General			
Specification		Dynamt	N.E.T.
Operating Voltage Range		3.0-5.0 DCV	3.0-5.5 DCV
MTBF		≥5 years	
Weight		15g	22g
Price		\$275	\$240
Ex Proof	ATEX	II 2G Ex d IIC Gb	
	IECEX	Ex d I and/or Ex d IIC	
Hydrocarbon			
Item		Dynamt	N.E.T.
Measuring Range	Methane	0-5%, 0-100% vol.	0-5%, 0-100% vol.
	HC	0-100% LEL.	
Accuracy		±10% (reading)	±1%FS(≤25%) ±2%FS(≤50%) ±5%FS(>50%)
Response Time T90		≤30 seconds	

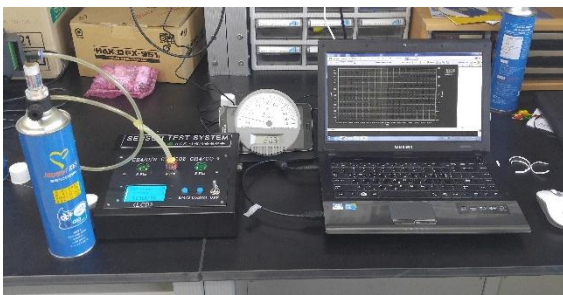


Figure 2. Testing board and performance test of gas sensors

Fig. 3 and Fig. 4 displays results of concentration measuring five tests of the 1st sensor at 30%LEL and 25%LEL in methane respectively. In here, peak voltages are uniformed at 3rd to 4th tests. Final concentration is used by average of five test results at Fig. 3 and Fig. 4. Fig. 5 shows average values of output voltages of three sensors made by N.E.T. and comparably good linear characteristics.

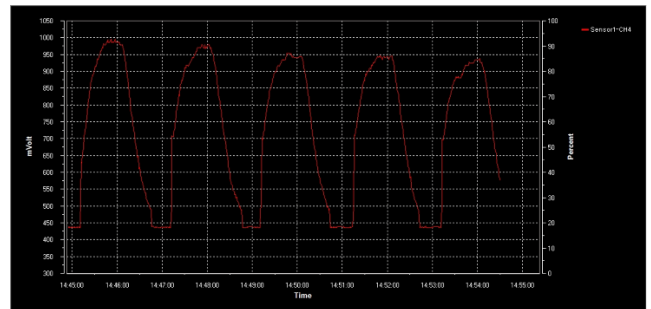


Figure 3. Test result of the 1st sensor at CH₄ 30%LEL

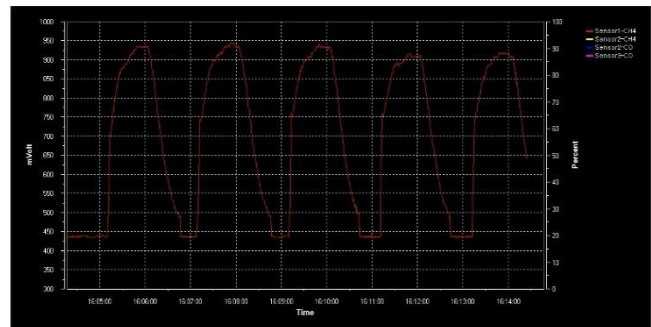


Figure 4. Test result of the 2nd sensor at CH₄ 25%LEL

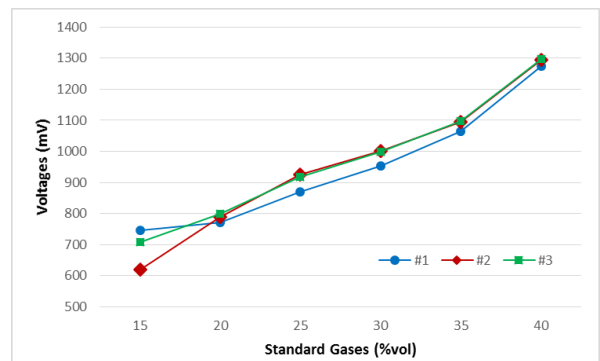


Figure 5. Output average voltages of test sensors

C. Analysis of Characteristic of IR Sensors

We utilized the method of least squares, one of the linear regression function, for analyzing the output voltages and improving accuracy of gas leak detectors. The method of least squares is getting the most approximate function from the data. In the other words, this method makes less error between the approximation function and data.

$$y = ax + b \quad (1)$$

If the approximation function is (1), then the error equation is defined by using (2), number of n data ((p₁, q₁), (p₂, q₂), ..., (p_n, q_n)), and (1).

$$e_i = q_i - y_i = q_i - (ap_i + b) \quad (2)$$

A goal of the method of least squares minimizes the sum of the squares of the error. So, the (3) expresses this goal:

$$S = \sum_{i=1}^n (e_i)^2 = \sum_{i=1}^n (q_i - y_i)^2 = \sum_{i=1}^n (q_i - (ap_i + b))^2 \quad (3)$$

Equations (4) and (5) are derived from (3) as a result of partial differential by gradient (*a*) and intercept (*b*) for minimizing sum of the squares of the error.

$$\frac{\partial S}{\partial a} = 2 \sum_{i=1}^n (q_i - (ap_i + b))(-p_i) = 0 \quad (4)$$

$$\frac{\partial S}{\partial b} = 2 \sum_{i=1}^n (q_i - (ap_i + b))(-1) = 0 \quad (5)$$

Based on (4) and (5), we calculated (6) and (7), which are approximation functions of the sensor output voltages.

$$y_d = 22.542 x_d + 462.77 \quad (6)$$

$$y_n = 15.169 x_n + 451.07 \quad (7)$$

The *x* is %LEL (Lower Explosion Limit) concentration of the gas, and the *y* is approximated output voltage of sensors. We can calculate sum of the squares of the errors using (3), and results are (8).

$$S_d = 0.12, S_n = 0.05 \quad (8)$$

Equation (8) means that the approximation for two sensors is very elaborate, and we can also check that absolute values of sum of error are close to zero. This fact means that the response is very excellent. So based on (6) and (7) that are calculated by the linear regression using the method of least squares, we can calculate the formula for %LEL concentrations of the real concentrations.

$$y_d = 0.0496x_d - 0.0061 \quad (9)$$

$$y_n = 0.0501x_n \quad (10)$$

Results of (9) and (10) follow Table III.

TABLE III. RESULT VALUES OF PREDICTION

Standard gas (%LEL)	Prediction(% Vol)	
	Dynamet	N.E.T
15	0.7501	0.7515
20	0.9981	1.002
25	1.2461	1.2525
30	1.4941	1.503
35	1.7421	1.7535
40	1.9901	2.004
45	2.2381	2.2545

D. Development and Test of IR Combustible Gas Detector

Output values of the sensor can be changed from its unique characteristics, using frequency, temperature and humidity conditions and so on [6]. So we have to apply some calibration like interpolation, mapping, and learning and so on [7]. Therefore, we developed combustible gas (CH₄, C₃H₈) detector using IR sensors and accuracy improvement algorithm using Lagrange interpolation and linear piecewise approximation. Then, we tested their performance through measuring and analyzing output from gas detectors when injecting variety of standard gases made in Korea Gas Safety Corporation.



Figure 6. Comparison Test of combustible gas detectors

Two combustible gas detectors using IR sensors which are shown Fig. 6 are manufactured by using the Dynamet's sensor. A domestic detector applies the linear regression using eight kinds of standard gases, and an international product is guaranteed performance by the Research Institute of Standard for Environmental Testing. Experiment environment follows Table IV.

TABLE IV. ENVIRONMENT OF EXPERIMENT

Item	Domestic	International
Temperature	18.6 °C	23.7 °C
Humidity	22%	42%

Table V, Fig. 7 and Fig. 8 show concentration experiment results of a domestic gas detector. A domestic detector has some errors at 15%LEL, 25%LEL and 45%LEL section about max values. About T90 values, this has some error at 25%LEL, 40%LEL and 45%LEL section.

TABLE V. RESULT VALUES OF A GAS DETECTOR (DOMESTIC)

Standard gas		Max values (% Vol)	T90 values (% Vol)
%LEL	% Vol		
15	0.75	0.88	0.72
20	1	1.04	1.02
25	1.25	1.5	1.45
30	1.5	1.51	1.48
35	1.75	1.77	1.75
40	2	2.16	2.08
45	2.25	2.12	2.08

TABLE VI. RESULTS OF A COMBUSTIBLE GAS DETECTOR (INTERNATIONAL)

Standard gas		Max values (% Vol)	T90 values (% Vol)
%LEL	% Vol		
15	0.75	15	15
20	1	20	20
25	1.25	29	29
30	1.5	31	30
35	1.75	35	34
40	2	41	40
45	2.25	47	46

TABLE VII. COMPARISON OF PREDICTION AND MEASUREMENT VALUES

Standard gas		Predicted		Measured	
%LEL	% Vol	output	errors	output	Errors
15	0.75	0.7501	0.0001	0.72	-0.03
20	1	0.9981	-0.0019	1.02	0.02
25	1.25	1.2461	-0.0039	1.45	0.2
30	1.5	1.4941	-0.0059	1.48	-0.02
35	1.75	1.7421	-0.0079	1.75	0
40	2	1.9901	-0.0099	2.08	0.08
45	2.25	2.2381	-0.0119	2.08	-0.17
Sum of errors			-0.0413		0.08

Table VII shows the results of concentration experiments for an international gas detector (RaeSystems co., Ltd), and the graphs are shown in Fig. 7 and Fig. 8. Errors of this detector are very small except 25%LEL section on the max and T90 values as shown in Table VIII and Fig. 9. Results of testing methane detectors, output curve of an international detector is more linear other than a Korean detector.

Here, we proposed a method to approximate output of a gas leak detector using T90 values and calculation result of

(9). In Table VIII and Fig. 9, we can know that our proposed method, output of a detector using prediction (9) are more elaborate than those of a Korean realistic detector.

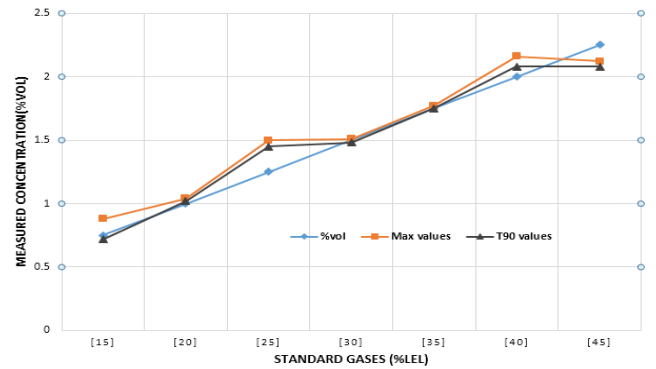


Figure 7. Results of gas concentration density (domestic)

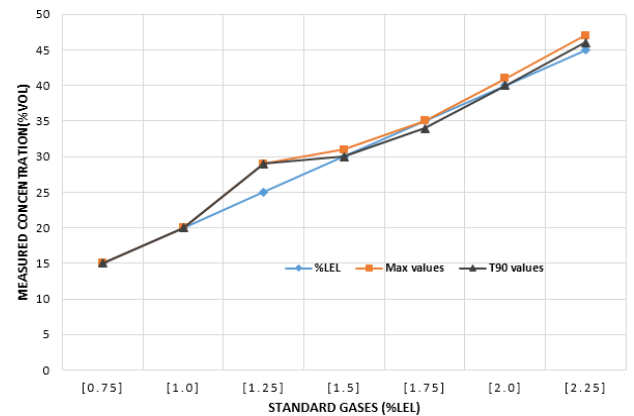


Figure 8. Results of gas concentration density (international)

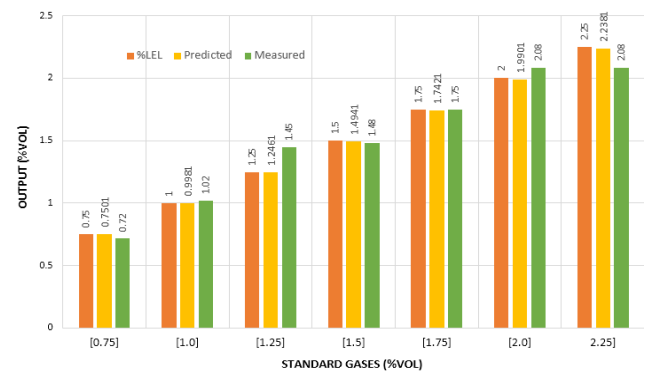


Figure 9. Results of predicted and measured values

III. CONCLUSION

In this paper, we developed a board to test IR combustible gas sensors and performed their test. Then, we induced the best calibration line to represent characteristics of sensors using linearization regression equation and Lagrange interpolation polynomial. We tested and analyzed the performance of infrared gas sensors and applied a gas detector manufacture. To analyze our and other company's detectors, we performed measurement tests with eight standard gases made by Korea Gas Safety Corporation. We demonstrated that the gas leak detector is better in measuring accuracy other than detectors through gaseous concentration experiments.

Hopefully we'll prevent the dangerous gas and fire incidents as using our developed instruments in the gas safety management fields.

ACKNOWLEDGEMENT

This research was supported by Korea Institute for Advancement of Technology (KIAT) Research Project "Development of Smart Gas Leak Measuring Instrument and Performance Test Technology (No. R0003355) and the Project No. 201304221024 "Security Fence Detection Accuracy of Cable Friction Electricity Sensor System" of the University of Seoul.

REFERENCES

- [1] Incident Investigation & Safety Checkup Division, Gas Incident Statistics, Korea Gas Safety Corporation, 2015.
- [2] Seong-Hwan Han, Hern-Chang Lee, Kyosik Park, Tae-Ok Kim, "Consequence Analysis for Fire and Explosion Accidents in Propylene Recovery Process", KIGAS Vol.18, No.1, pp 52~60, 2014.2.
- [3] Dynament Ltd, Technical datasheet TDS0118, Dynament Ltd., 2014.8.27.
- [4] Nano Environmental Technology, DS2967 rev. 9 - IRNEX-P low power, Nano Environmental Technology, 2014.9.7.
- [5] Gyou-tae Park, "A Study on the Measurement Accuracy Improvement of a Portable Combustible Gas Detector Using an Infrared Sensor" University of Seoul, Ph.D. thesis, 2014.
- [6] In-Soo Lee, Young-Wung Kim, "Analysis and Compensation of Sensor Drift in the Gas Monitoring System", KI-IT Vol.9, No.11, pp 9~15, 2011.
- [7] Gyou-tae Park, Geun-jun Lyu, Young-do Jo, Jeong-rock Kwon, Sang-guk Ahn, Hiesik Kim, "A study on the Development and Accuracy Improvement of an IR Combustible Gas Leak Detector with Explosion Proof", KIGAS Vol.18, No.3, pp 1~12, 2014.



Seungho Han He was born at Gyeonggi Province in South Korea on December 3rd, 1987. Now he earned Master degree in School of Electrical and Computer Engineering at University of Seoul, Korea in 2016. He earned the B.S degrees in Computer Science at the University of Seoul, Korea in 2013. He is currently a researcher of Electrical and Computer Engineering-based Gas Safety Facilities at Korea Gas Safety Corporation (KGS). His research interests focus on IT convergence technology for gas safety management and infrared gas leak detectors. Address: 1390 Wonjung-ro, Maengdong-myeon, Eumsung-gun, Chungcheongbuk-do, Korea (27738)



Gyoutae Park He was born at Kyeong-buk Province in South Korea on March 29th, 1970. Now he earned Ph.D degree in School of Electrical and Computer Engineering at University of Seoul, Korea in 2014. He earned the B.S. and M.S. degrees in Electronic Engineering at the Yeongnam University, Gyeongsan, Korea in 1996 and 1999, respectively. He is currently a senior researcher of Electrical and Computer Engineering-based Gas Safety Facilities at Korea Gas Safety Corporation (KGS). His research interests focus on IT convergence technology for gas safety management, solar cell/heat, new renewable energy, and infrared gas leak detectors. Address: 1390 Wonjung-ro, Maengdong-myeon, Eumsung-gun, Chungcheongbuk-do, Korea (27738)



Hiesik Kim was born in 1953 in Kyoung-Ju, Korea. He received the Bachelor's degree in mechanical engineering from Seoul National University, Seoul, Korea, in 1977. He earned a Master's degree in production engineering from the Korea Advanced Institute of Science and Technology (KAIST), Daejeon, Korea. He granted the Doctorate (Doktor-Ingenieur) degree in production engineering (FhG-IPA) from Stuttgart University, Stuttgart, Germany, in 1987 under the supervision of Prof. Dr.-Ing. H.-J. Warnecke. He was a Technical Official with the Ministry of Science and Technology of the Korean Government from 1979 to 1982 and as Senior Researcher with the CAD/CAM Research Laboratory, KAIST from 1987 to 1989. Since 1989, he has been a Professor with the Department of Electrical and Computer Engineering, University of Seoul, Seoul. He was the Vice Dean with the Engineering College. His current research interests include optical measurement of geometries, applications of sensors for automation and image processing.