

Vol 3 Issue 9 Oct 2013

Impact Factor : 0.2105(GISI)

ISSN No : 2230-7850

Monthly Multidisciplinary
Research Journal

*Indian Streams
Research Journal*

Executive Editor

Ashok Yakkaldevi

Editor-in-chief

H.N.Jagtap

IMPACT FACTOR : 0.2105

Welcome to ISRJ

RNI MAHMUL/2011/38595

ISSN No.2230-7850

Indian Streams Research Journal is a multidisciplinary research journal, published monthly in English, Hindi & Marathi Language. All research papers submitted to the journal will be double - blind peer reviewed referred by members of the editorial Board readers will include investigator in universities, research institutes government and industry with research interest in the general subjects.

International Advisory Board

Flávio de São Pedro Filho Federal University of Rondonia, Brazil	Mohammad Hailat Dept. of Mathematical Sciences, University of South Carolina Aiken, Aiken SC 29801	Hasan Baktir English Language and Literature Department, Kayseri
Kamani Perera Regional Centre For Strategic Studies, Sri Lanka	Abdullah Sabbagh Engineering Studies, Sydney	Ghayoor Abbas Chotana Department of Chemistry, Lahore University of Management Sciences [PK]
Janaki Sinnasamy Librarian, University of Malaya [Malaysia]	Catalina Neculai University of Coventry, UK	Anna Maria Constantinovici AL. I. Cuza University, Romania
Romona Mihaila Spiru Haret University, Romania	Ecaterina Patrascu Spiru Haret University, Bucharest	Horia Patrascu Spiru Haret University, Bucharest, Romania
Delia Serbescu Spiru Haret University, Bucharest, Romania	Loredana Bosca Spiru Haret University, Romania	Ilie Pintea, Spiru Haret University, Romania
Anurag Misra DBS College, Kanpur	Fabricio Moraes de Almeida Federal University of Rondonia, Brazil	Xiaohua Yang PhD, USA
Titus Pop	George - Calin SERITAN Postdoctoral Researcher	Nawab Ali Khan College of Business Administration

Editorial Board

Pratap Vyamktrao Naikwade ASP College Devrukh,Ratnagiri,MS India	Iresh Swami Ex - VC. Solapur University, Solapur	Rajendra Shendge Director, B.C.U.D. Solapur University, Solapur
R. R. Patil Head Geology Department Solapur University, Solapur	N.S. Dhaygude Ex. Prin. Dayanand College, Solapur	R. R. Yaliker Director Managment Institute, Solapur
Rama Bhosale Prin. and Jt. Director Higher Education, Panvel	Narendra Kadu Jt. Director Higher Education, Pune	Umesh Rajderkar Head Humanities & Social Science YCMOU, Nashik
Salve R. N. Department of Sociology, Shivaji University, Kolhapur	K. M. Bhandarkar Praful Patel College of Education, Gondia	S. R. Pandya Head Education Dept. Mumbai University, Mumbai
Govind P. Shinde Bharati Vidyapeeth School of Distance Education Center, Navi Mumbai	Sonal Singh Vikram University, Ujjain	Alka Darshan Shrivastava Shaskiya Snatkottar Mahavidyalaya, Dhar
Chakane Sanjay Dnyaneshwar Arts, Science & Commerce College, Indapur, Pune	G. P. Patankar S. D. M. Degree College, Honavar, Karnataka	Rahul Shriram Sudke Devi Ahilya Vishwavidyalaya, Indore
Awadhesh Kumar Shirotriya Secretary, Play India Play (Trust),Meerut	Maj. S. Bakhtiar Choudhary Director,Hyderabad AP India.	S.KANNAN Ph.D , Annamalai University,TN
	S.Parvathi Devi Ph.D.-University of Allahabad	Satish Kumar Kalhotra
	Sonal Singh	

**Address:-Ashok Yakkaldevi 258/34, Raviwar Peth, Solapur - 413 005 Maharashtra, India
Cell : 9595 359 435, Ph No: 02172372010 Email: ayisrj@yahoo.in Website: www.isrj.net**



POTENTIOSTATIC ELECTROCHEMICAL PREPARATION AND CHARACTERISATION OF ZnCdSe



Pathak R. K. And Sandeep K. Gohar

Dep. of Chemistry, Govt. MLB P.G. girls College, Indore (M.P.) India
Dep. of Chemistry, Govt. Holkar Science College, Indore (M.P.) India

Abstract: The electrodeposition of ZnCdSe polycrystalline semiconducting thin films from aqueous acidic bath without any additives onto mild steel substrate is described. The growth of ternary Zn/Cd selenides opens up the possibility of their applications for novel opto-electronic devices in the visible region of electromagnetic radiation. Electrodeposition technique is an important technique for effective application of such a valuable system. In this work ZnCdSe are cathodically electro-synthesized from aqueous solution containing Zinc Sulphate, Selenium dioxide and Cadmium Sulphate. Morphological and the structural studies of the electrodeposited material were determined by SEM, XRD while the film composition was determined by energy dispersive x-ray (EDAX) spectroscopy.

Keywords: Electrodeposition, corrosion rate, Film thickness, SEM, XRD and EDAX analysis.

INTRODUCTION

ZnCdSe is an important class of semiconducting materials which find extensive application in novel optoelectronic devices like blue-green lasers, light emitting diodes, and photovoltaic solar cells (1,2). Thin films of this alloy would prove extremely useful in the preparation of image intensifiers, cathode ray screens, thin-film transistors, photovoltaic and photoelectrochemical solar cells (3). It's one dimensional semiconducting nanostructures have attracted interest in device applications (4). In particular nanomaterials based on II-VI compounds are suitable candidates for nanoptics and nanosensing (5,6). Due to their wide band gap, ZnCdSe films have been extensively studied as materials for lasers and light emitting diodes in the blue-green region of visible spectrum (7, 8). There are several reports on the electrodeposition of ZnSe from aqueous (9, 10) and non aqueous solutions (11), as well as from molten salt solutions (12). Zinc and selenium are codeposited in order to synthesize ternary ZnCdSe alloy (13-14). The elemental analysis of the sample is done by EDAX (energy dispersive analysis).

Materials and Methods: Electrodeposition process has been used in preparing thin film of ZnCdSe ternary alloy. The electrochemical assembly consists of a conventional three-electrode system. In this assembly titanium electrode (1 cm × 1 cm) served as a counter electrode, saturated calomel electrode (SCE) was used as a reference electrode and the mild steel substrate (1 cm × 1 cm) was used as a working electrode. The reagents used consist of cadmium sulphate heptahydrate, zinc sulphate heptahydrate and selenium dioxide. All the reagents were of analytical grade. The electroplating solutions were prepared in deionized water. Experiment The ZnCdSe thin film was potentiostatically

electrodeposited at -0.700V Vs SCE. The deposition of ZnCdSe ternary alloy was carried out for 50 minutes. For data acquisition transistor based power supply unit Model 613 (Systronics electronics limited) and multimeters were used as per the circuit requirement for the measurement of current and potential during electrodeposition. Three different solutions were prepared by taking ZnSO₄·7H₂O, CdSO₄·7H₂O and SeO₂ and one solution containing ZnSO₄·7H₂O, SeO₂ was prepared. The pH of solution was adjusted between 3.5-4. The temperature of bath was maintained at 40±2°C. All the electro-synthesized samples were tested in 0.1 N HCl, 0.01 N HCl, 0.001 N HCl, 1 % NaCl, 0.01 % NaCl, 0.001 % NaCl, 0.1 N H₂SO₄, 0.01 N H₂SO₄ and 0.001 N H₂SO₄ to acquire the Current-Time data, Current-Voltage data and to construct Tafel graph. The SEM images and EDAX of the electrodeposited samples were obtained by SEM instrument model JEOL JSM 5600 while X ray diffraction pattern of the samples were obtained by X-ray diffractometer D8 Advance Bruker AXS.

RESULTS AND DISCUSSIONS

The present investigation deals with the electrodeposition of ZnCdSe alloy samples and their study on the aspects of corrosion parameters, SEM, XRD and EDAX analysis. The deposition potential of zinc, cadmium and selenium ions are different. Therefore to estimate the deposition potential for the codeposition of these ions, Current-Voltage data is acquired. Fig.1 shows a typical sigmoidal graph which mainly consists of three regions namely-diffusion current region, residual current region and limiting current region. The thin films were deposited for 50 minutes from all the different electroplating solutions having

different concentration of cadmium. The potential was maintained at a constant value of -7.00mv Vs SCE and the value of corresponding current is taken with respect to time. A typical current-time curve is shown is Fig.2. Initially the current value is high but as the deposition progresses on the substrate surface, its surface morphology changes due to which the current value becomes time invariant. The current-time data is used to determine the thickness of the deposited thin film. The thickness of the sample was calculated by using expression

$$\text{Film thickness} = \frac{i \times t \times E_w}{F d A}$$

The area under the current-time curve was used for the calculation of thickness of samples prepared from different electroplating solutions. The thickness of thin film prepared from solution containing Zn(0.1M)+Se(0.01M) and the solution containing Zn(0.1M) +Se(0.01M) +Cd(0.01M) is nearly same while, the thickness of thin film prepared from the solutions containing Zn(0.1M) +Se(0.01M) +Cd(0.05M) and Zn(0.1M) +Se(0.01M) +Cd(0.10M) are comparatively higher. After electrochemical synthesis of the thin film, the samples were tested for their stability in the corroding solutions of HCl, NaCl, and H2SO4 of different concentrations. First cathodic polarisation of the sample is done by sweeping the potential between reference electrode and the working electrode meanwhile the corresponding readings of the current was noted. Similarly, after changing the leads of the multimeters anodic polarisation was done by sweeping the potential in the reverse direction. The corresponding current and potential readings were again noted down. With the help of the data obtained from cathodic and anodic polarisation Tafel plot was constructed. A typical Tafel curves is shown in Fig .3

The corrosion rate (milli inches per year) of deposited the thin film is determined by the expression given below.

$$\text{CR (mpy)} = \frac{0.13 \times I_{\text{corr}} \times E_w}{F \times d \times A}$$

Where,

CR= corrosion rate in milli inches per year

I_{corr} = corrosion current

F= Faraday's constant

A= area of cross section of the working electrode

d= density of alloy

The calculated values of corrosion rate (Table 1.) indicates that there is a decrease in the corrosion rate as well as corrosion current on increasing the dilution of the corroding solutions viz., HCl, H2SO4, NaCl respectively. This also shows that corrosion decreases with the increasing dilution of the corrosive environment. The SEM images of the sample show cauliflower like structure of the deposited particle (Fig.5-6). There is an increment in the bulk of particle being deposited on the mild steel substrate surface along with increase in cadmium ion concentration in the electroplating solutions. The EDAX of the sample are shown in fig.8. The peaks obtained in the EDAX indicate the

inclusion of zinc, cadmium and selenium in the deposited thin film. From EDAX analysis atomic percentage of deposited elements is obtained. The percentage of cadmium in the electroplating solution is plotted against the percentage of cadmium deposited in the thin film. This graph indicates increase in the percentage of deposited cadmium with the increase in its concentration in the electroplating solutions (Fig.9).

The XRD patterns of all the samples were indexed successfully to determine the crystal structure, grain size and surface stress in the sample. The peaks obtained in the XRD pattern were compared with the reference pattern in the JCPDS card standard peaks. The crystal structure was found to be Hexagonal close Packing (HCP). XRD of the sample (Fig.4) indicates the polycrystalline nature of the thin film. The grain size is determined by scherer equation, which was found to lie between 10-100nm.

Williamson's Hall plot is obtained by plotting $4\sin\theta$ Vs $\beta\cos\theta$. The slope and intercept of the curve gives crystallite size and strain in the deposited samples (Fig.7). The negative slopes represent compressive strain while the positive slopes indicate extensive strain in the sample.

Table1. Testing of electrodeposited thin films in experimental solutions of different Concentrations

Electroplating solution	Experimental solution H ₂ SO ₄	Corrosion Rate (in 10 ⁻³ mpy)	Experimental solution HCl	Corrosion rate (in 10 ⁻³ mpy)	Experimental solution NaCl	Corrosion rate (in 10 ⁻³ mpy)
Zn(0.1M) + Se(0.01M) + Cd(0.01M)	0.1N H ₂ SO ₄	7.5	0.1 N HCl	9.0	1% NaCl	8.2
	0.01N H ₂ SO ₄	3.2	0.01N HCl	5.8	0.01% NaCl	3.1
	0.001N H ₂ SO ₄	1.6	0.001N HCl	0.27	0.001% NaCl	2.2
Zn(0.1M) + Se(0.01M) + Cd(0.05M)	0.1N H ₂ SO ₄	0.43	0.1 N HCl	0.29	1% NaCl	0.8
	0.01N H ₂ SO ₄	0.04	0.01N HCl	0.45	0.01% NaCl	0.6
	0.001N H ₂ SO ₄	0.08	0.001N HCl	0.13	0.001% NaCl	0.2
Zn(0.1M) + Se(0.01M) + Cd(0.10M)	0.1N H ₂ SO ₄	0.15	0.1 N HCl	0.3	1% NaCl	0.2
	0.01N H ₂ SO ₄	0.113	0.01N HCl	0.14	0.01% NaCl	0.1
	0.001N H ₂ SO ₄	0.119	0.001N HCl	0.12	0.001% NaCl	0.15
Zn(0.1M) + Se(0.01M)	0.1N H ₂ SO ₄	1.47	0.1 N HCl	1.58	1% NaCl	1.34
	0.01N H ₂ SO ₄	0.98	0.01N HCl	1.05	0.01% NaCl	0.54
	0.001N H ₂ SO ₄	0.33	0.001N HCl	0.38	0.001% NaCl	0.18

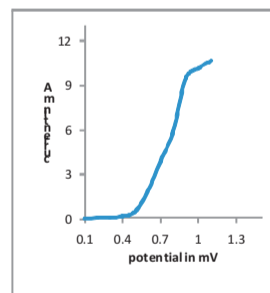


Fig.1 Current Vs Potential

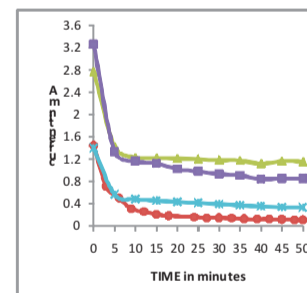


Fig.2 Current Vs Time

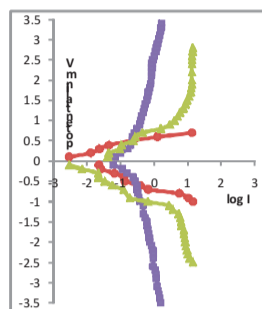


Fig.3 Superimposition of typical tafel graphs

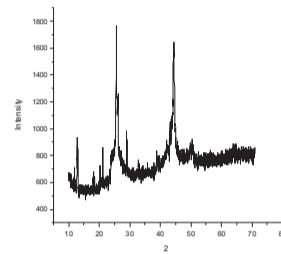


Fig.4 XRD of one of the sample

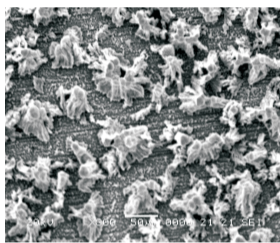


Fig.5 SEM image of ZnCdSe sample

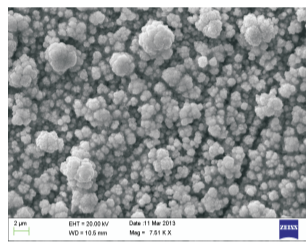


Fig.6 SEM image of ZnSe sample

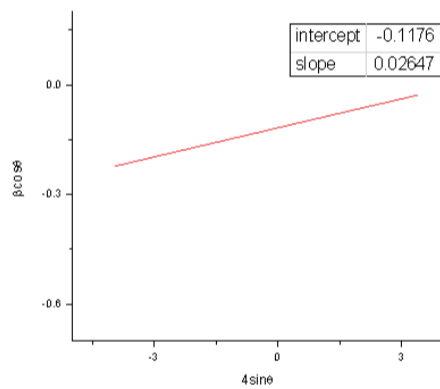


Fig.7 Williamson Hall plot

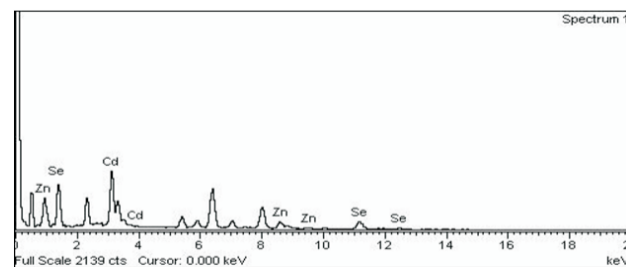


Fig 8. EDAX of one of the prepared sample

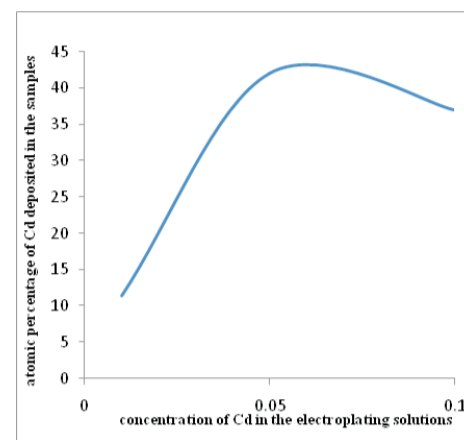


Fig.9 Atomic % of Cd in thin film Vs Cd ion concentration in electroplating solution

CONCLUSION

On the basis of current-voltage data derived from the cathodic and anodic polarisation tafel plot were constructed to determine the corrosion rate. The corrosion rate of the sample was found to decrease with the increase in the concentration of cadmium in the electroplating solution. The corrosion rate was also found to decrease with the increasing dilution of corroding solutions i.e., HCl, H₂SO₄ & NaCl solutions. Atomic percentage of electrodeposited cadmium was found to increase with the increase in the concentration of cadmium in the electroplating solution. The deposition of ZnCdSe thin films is confirmed by XRD & EDAX of the samples. The XRD pattern recorded shows that the thin films are polycrystalline in nature with a (HCP) hexagonal close packing. Morphological and structural details of the sample were studied by scanning electron microscope (SEM). SEM images shows cauliflower like structure and the deposited thin film were found to be uniform. The grain was calculated which lies between 10-100nm.

REFERENCES

- I. Bassam. A. Al., Brinkman A. W., Russell. G. J. and Woods J., J. Cryst. Growth, 86, 673 (1988)
- II. Chandramohan. R., Sanjeeviraja C. and Mahalingam. T., Phys. Stat. Solidi (a), 163, R11 (1997).
- III. Natarajan. C., G. Nogami and Sharon. M., Bulletin of electrochem. 12, 136 (1996).
- IV. Law M., Goldberger J and Yang P 2004 Annu. Rev. Mater. Res. 24 83
- V. Duan X. Huang Y, Agrawal R and Lieber C M 2003 Nature 421 241
- VI. Wang D, He J Rosenzweig N and Rosenzweig Z 2004 Nano Lett. 4 409
- VII. Haase M A, Qui J, DePuydt J M and Cheng H 1991 Appl. Phys. Lett. 59 1272
- VIII. Nakayama N, Itoh S, Ohata T, Nakano K, Okuyama H, Ozawa M, Ishibashi A, Ikeda M and Mori Y 1993 Electron. Lett. 29 1488
- IX. Rajeshwar. K., Adv. Mater. 4 (1992) 23.
- X. Bouroushian. M., T. Kosanovic., Z. Loizos., Z. Spyrellis., J. S

- oliState Electrochem.6(2002) 272.
XI.Gal D.,Hodes. G.,J.Electrochem.Soc.147 (2000) 1825
XII.Sanchez. S., Lucas. C.,Picard. G.S.,Bermejo. M.R,
Astrellejo Y., Thin Solid Films 361-362 (2000) 107.
XIII.Krishnan.V., Ham.D., Mishra. K.K.,Rajeshwar. K., J.
Electrochem. Soc. 139(1992) 23.
XIV.Natarajan.C., Sharon. M.,Levy-Cement. C.,M.
Neumann-Spallart Thin Solid Films 261 (1995) 44.



Sandeep K. Gohar
Dep. of Chemistry, Govt. Holkar Science College,
Indore (M.P.) India

Publish Research Article International Level Multidisciplinary Research Journal For All Subjects

Dear Sir/Mam,

We invite unpublished research paper.Summary of Research Project,Theses,Books and Books Review of publication,you will be pleased to know that our journals are

Associated and Indexed,India

- * International Scientific Journal Consortium Scientific
- * OPEN J-GATE

Associated and Indexed,USA

- Google Scholar
- EBSCO
- DOAJ
- Index Copernicus
- Publication Index
- Academic Journal Database
- Contemporary Research Index
- Academic Paper Databse
- Digital Journals Database
- Current Index to Scholarly Journals
- Elite Scientific Journal Archive
- Directory Of Academic Resources
- Scholar Journal Index
- Recent Science Index
- Scientific Resources Database

Indian Streams Research Journal
258/34 Raviwar Peth Solapur-413005,Maharashtra
Contact-9595359435
E-Mail-ayisrj@yahoo.in/ayisrj2011@gmail.com
Website : www.isrj.net